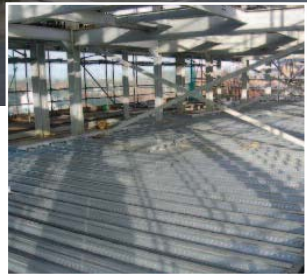




Residential



Broad Road Apartments

Sale, Manchester

The £15,000,000 scheme comprises of the erection of 2 apartment blocks (six storeys and seven storeys high) along with 45 2 bedroom apartments, and a multi storey car park to provide 460 spaces on 10 split levels.

The site is a corner site with very tight access between the main road and the railway line, giving a very cramped area for services on site. So the use of fibres was considered so as to remove the obvious problems that laying large sheets of mesh reinforcement presented. So Steel Fibre Reinforcement was decided upon for access reasons, but also for time savings, and the

Health and Safety issue of removing an obvious trip hazard.

Technic Flooring who have worked with Richardson Projects on previous jobs, suggested the use of Fibre concrete at a meeting where access problems with laying the mesh were being discussed.

Richardson Projects took this on board and after discussions with the client proceeded with the fibre reinforced concrete.

Project Name
Broad Road Apartments

Location
Sale, Manchester

Architect
MBLA Architects & Urbanists

Main Contractor
Richardson Projects Ltd.

Sub Contractors
Metaldeck Ltd.,
Technic Concrete Floors Ltd

Usage
Residential



‘tight access – so fibre reinforced concrete was the perfect solution’